

An aerial photograph of a multi-lane highway bridge. The bridge has a concrete deck with yellow lane markings and a brick parapet with black metal railings. Several vehicles are on the bridge, including a white pickup truck, a white SUV, and a white car. Below the bridge, there are more lanes of the highway and green grassy areas. In the background, there are trees and a road intersection with traffic lights.

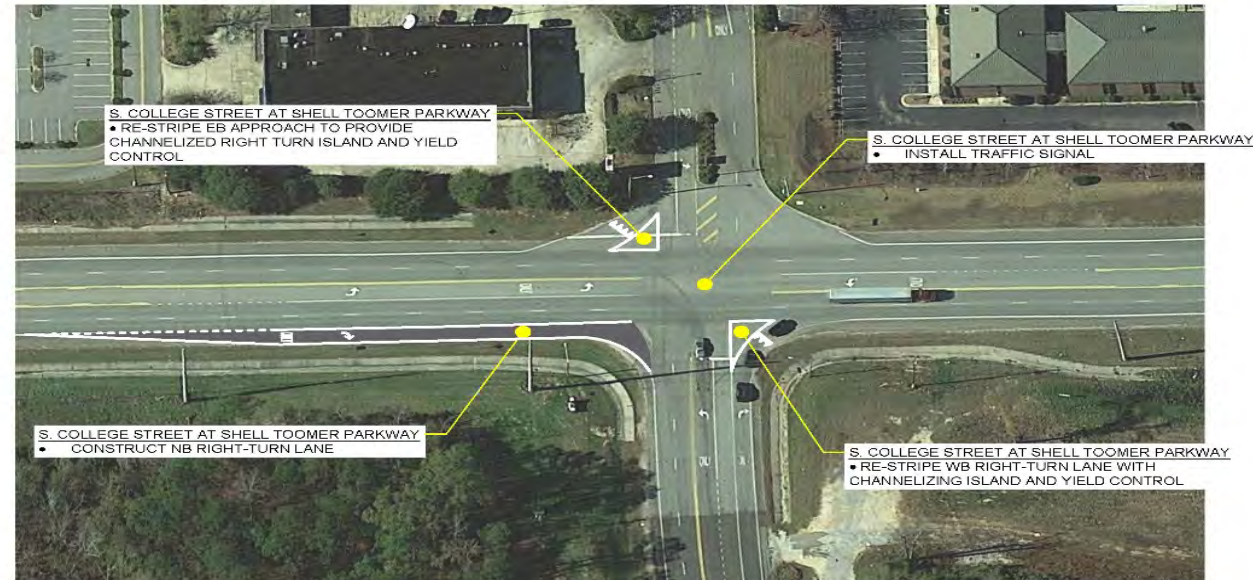
Engineering Services Department Comprehensive Traffic Study Recommendations

Alison Frazier, P.E.
Engineering Services Director/City Engineer

BENT CREEK ROAD



SOUTH COLLEGE STREET CORRIDOR



Signal System Note:
Signals at Shell Toomer Pkwy., I-85 NB Ramps, I-85 SB Ramps, and Veterans Parkway to be coordinated.

SKIPPER
CONSULTING INC

Legend

■ Required Pavement



North

Graphic
Scale: 1"=100'

October 2018

Figure 4
S. College St. at
Shell Toomer Parkway
Existing Improvements
College Street
Auburn, Alabama

1103-016

SOUTH COLLEGE STREET CORRIDOR





See Figure 5 for intersection improvements at S. College St. and I-85 SB Ramps

See Figure 6 for intersection improvements at S. College St. and Veterans Boulevard

SKIPPER
CONSULTING INC

Legend

-  Required Grass/Median
-  Required Raised Median



North

Graphic Scale: 1"=100'

Figure 9.1
S. College St. - I-85 to Shug Jordan Parkway / E. University Drive
Access Management Concept
College Street
February 2019 Auburn, Alabama 1103-016

SOUTH COLLEGE STREET CORRIDOR



Signal System Note:
 Signals at Shell Toomer Pkwy., I-85 NB Ramps, I-85 SB Ramps, and Veterans Parkway to be coordinated.

Note: Pedestrian ramps shall include tactile warning strips and truncated domes per ADA.

SKIPPER
 CONSULTING INC





Figure 6
 S. College St. at Veterans Blvd.
 Existing Improvements
 College Street
 Auburn, Alabama
 October 2018 1103-016

SOUTH COLLEGE STREET CORRIDOR



SKIPPER
CONSULTING INC

Legend

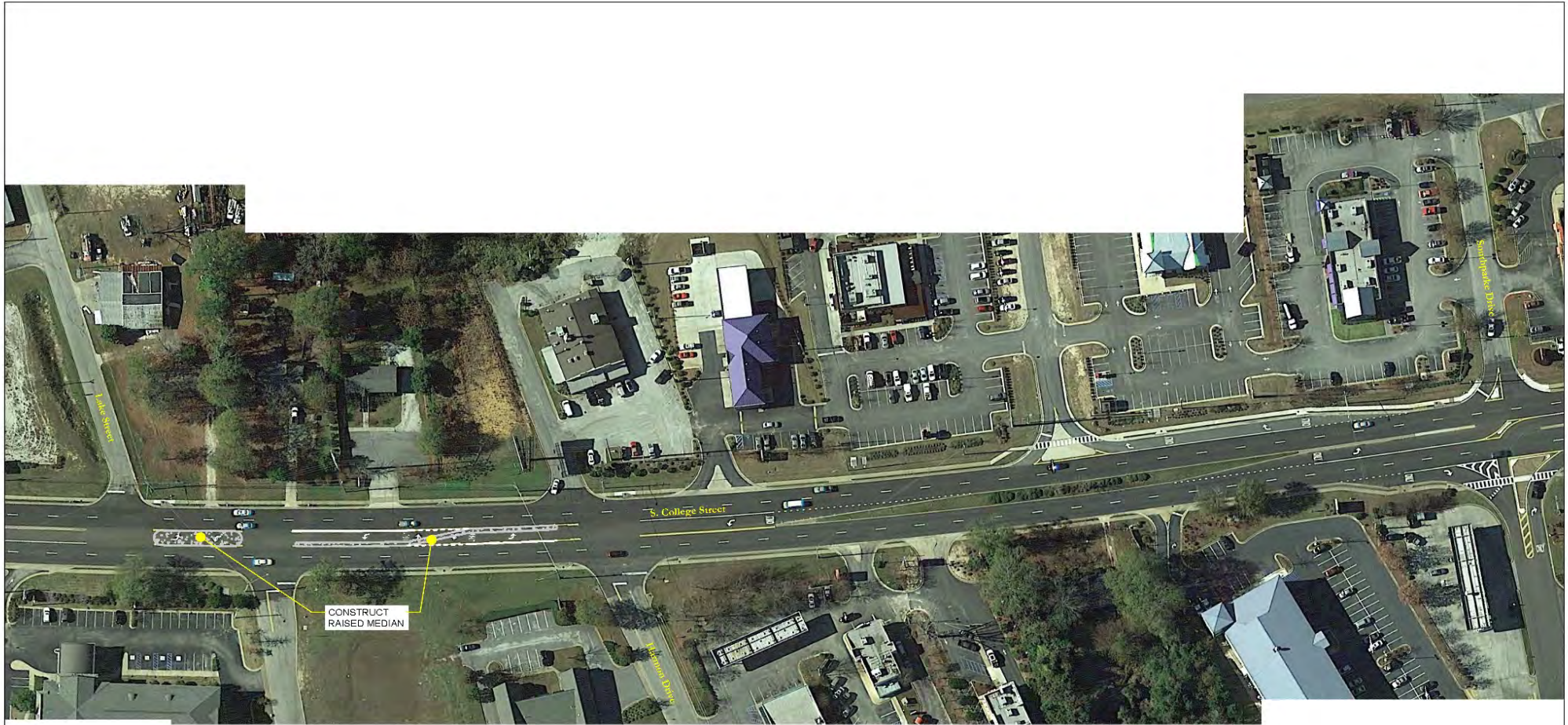
-  Required Grass/Median
-  Required Raised Median



North
Graphic
Scale: 1"=100'

Figure 9.2
S. College St. - I-85 to Shug Jordan
Parkway / E. University Drive
Access Management Concept
College Street
February 2019 Auburn, Alabama 1103-016



SOUTH COLLEGE STREET CORRIDOR



See Figure 7 for intersection improvements
at S. College St. and Harmon Drive

SKIPPER
CONSULTING INC

Legend

-  Required Grass/Median
-  Required Raised Median



Graphic
Scale: 1"=100'

Figure 9.3

S. College St. - I-85 to Shug Jordan
Parkway / E. University Drive
Access Management Concept
College Street
Auburn, Alabama

February 2019 1103-016

SOUTH COLLEGE STREET CORRIDOR



S. College Street Access Management Concept
 T-85 to Shug Jordan Pkwy./T. University Dr.
 See Figures 9.1 through 9.5

Note: Pedestrian ramps shall include tactile warning strips and truncated domes per ADA.



Legend	
	Required Pavement
	Required Sidewalk
	Required Ped. Ramp

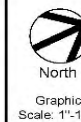


Figure 7
 S. College St. at Harmon Dr.
 Existing Improvements
 College Street
 Auburn, Alabama
 October 2018



SOUTH COLLEGE STREET CORRIDOR



See Figure 8 for intersection improvements at S. College St. and Longleaf Drive

SKIPPER
CONSULTING INC

Legend

-  Required Grass/Median
-  Required Raised Median

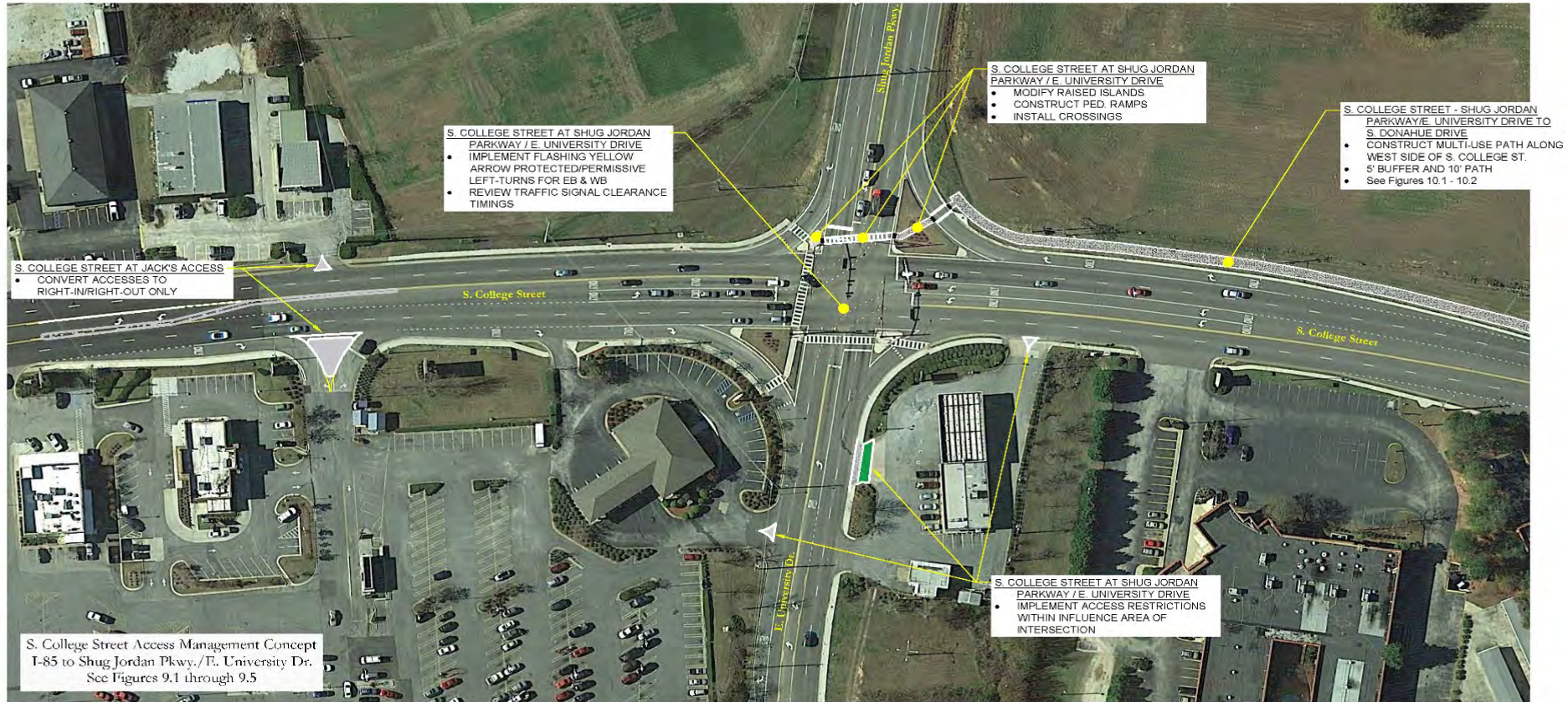


North

Graphic Scale: 1"=100'

Figure 9.4
S. College St. - I-85 to Shug Jordan Parkway / E. University Drive
Access Management Concept
College Street
February 2019 Auburn, Alabama 1103-016

SOUTH COLLEGE STREET CORRIDOR



S. College Street Access Management Concept
I-85 to Shug Jordan Pkwy./E. University Dr.
See Figures 9.1 through 9.5

Note: Pedestrian ramps shall include tactile warning strips and truncated domes per ADA.

Signal System Note:
Signals at Longleaf Drive and EUD/Shug Jordan Parkway to be coordinated.

SKIPPER
CONSULTING INC

Legend

-  Required Pavement
-  Required Grass
-  Required Multi-Use Path/Sidewalk
-  Required Ped. Ramp



North

Graphic Scale: 1"=100'

Figure 9
S. College St. at Shug Jordan Parkway / E. University Drive
Existing Improvements
College Street
Auburn, Alabama
February 2019 1103-016

SOUTH COLLEGE STREET CORRIDOR

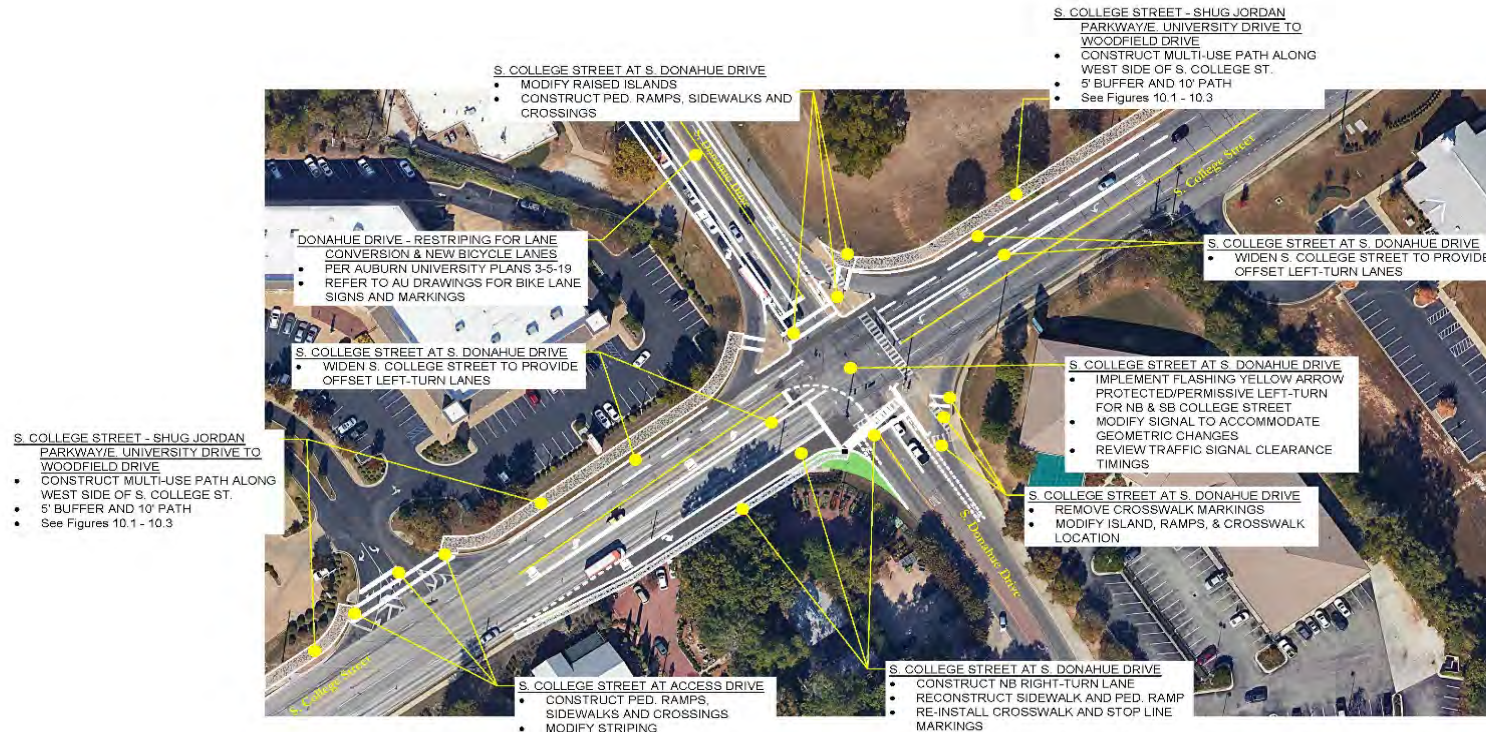


Legend	
	Required Grass/Median
	Required Multi-Use Path/Sidewalk



Figure 10.1
 S. College St. - Shug Jordan Pkwy./
 East University Dr. to Woodfield Dr.
 Existing Improvements
 College Street
 Auburn, Alabama
 February 2019 1103-016

SOUTH COLLEGE STREET CORRIDOR



Note: Pedestrian ramps shall include tactile warning strips and truncated domes per ADA.

Signal System Note:
Signals at S. Donahue Drive and Woodfield Drive to be coordinated.

	Legend <ul style="list-style-type: none"> Required Pavement Required Grass Required Multi-Use Path/Sidewalk Required Ped. Ramp 	 North Graphic Scale: 1"=100'	Figure 10 S. College St. at S. Donahue Dr. Existing Improvements College Street Auburn, Alabama February 2019 1103-016

SOUTH COLLEGE STREET CORRIDOR



SKIPPER
CONSULTING INC

Legend

- Required Multi-Use Path/Sidewalk



North
Graphic
Scale: 1"=100'

Figure 10.3
S. College St. - Shug Jordan Pkwy./
East University Dr. to Woodfield Dr.
Existing Improvements
College Street
Auburn, Alabama
February 2019 1103-016

SOUTH COLLEGE STREET CORRIDOR



Signal System Note:
Signals at S. Donahue Drive and
Woodfield Drive to be coordinated.

Note: Pedestrian ramps shall
include tactile warning strips
and truncated domes per ADA.

Legend

-  Required Pavement
-  Required Sidewalk
-  Required Ped. Ramp



North

Graphic
Scale: 1"=100'

Figure 22
N. College St. at Woodfield Dr.
Future Improvements

College Street
Auburn, Alabama

1103-016

SOUTH COLLEGE STREET CORRIDOR



Note: Pedestrian ramps shall include tactile warning strips and truncated domes per ADA.

SKIPPER
CONSULTING INC

Legend

- Required Pavement
- Required Grass
- Required Sidewalk
- Required Ped. Ramp



North

Graphic Scale: 1"=50'

Figure 23
S. College St. at Thach Avenue
Future Improvements

College Street
Auburn, Alabama

October 2018

1103-016

NORTH COLLEGE STREET CORRIDOR



SKIPPER
CONSULTING INC

Legend	
	Required Pavement
	Required Grass
	Required Sidewalk
	Required Ped. Ramp

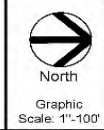
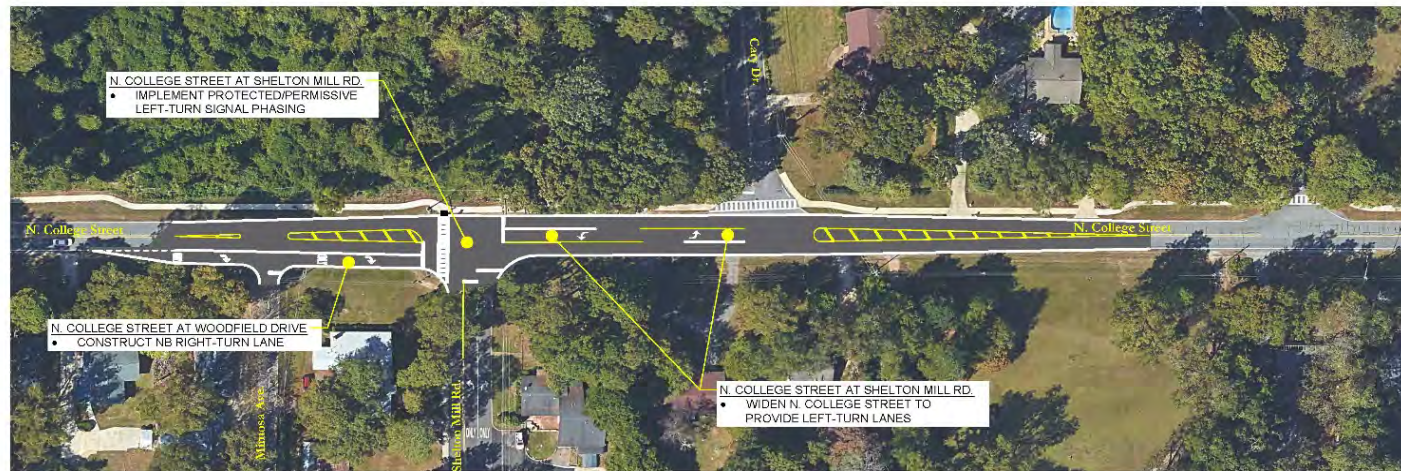


Figure 13
N. College St. at Drake Ave.
Existing Improvements

College Street
Auburn, Alabama

October 2018 1103-016

NORTH COLLEGE STREET CORRIDOR



	Legend	 North Graphic Scale: 1"=100'	Figure 14 N. College St. at Shelton Mill Rd. Existing Improvements College Street Auburn, Alabama February 2019 1103-016
	Required Pavement		
	Required Grass		

NORTH COLLEGE STREET CORRIDOR



	Legend	 North	Figure 16 N. College St. at Asheton Ln. Existing Improvements
	Required Pavement		
		February 2019	College Street Auburn, Alabama 1103-018

SOUTH DEAN ROAD CORRIDOR

Dean Road (3-Lane Cross-section with Bicycle Lanes) at East University Drive South



SKIPPER
CONSULTING INC



North

Graphic
Scale: 1"=100'

Figure 4
Dean Road at
East University Drive
Dean Road
Auburn, Alabama

1109-016

SOUTH DEAN ROAD CORRIDOR

Dean Road (3-Lane Cross-section with Bicycle Lanes) at Moores Mill Road



SOUTH DEAN ROAD CORRIDOR

Dean Road (3-Lane Cross-section with Bicycle Lanes) Near Middle School



SKIPPER
CONSULTING INC



North

Graphic

Scale: 1"=100'

Figure 6
Dean Road
Near Middle School
Dean Road
Auburn, Alabama

January 2019

1103-018

SOUTH DEAN ROAD CORRIDOR

Dean Road (3-Lane Cross-section with Bicycle Lanes) at Thach Avenue



SKIPPER
CONSULTING INC



North

Graphic
Scale: 1"=100'

January 2019

Figure 8
Dean Road
at Thach Avenue
Dean Road
Auburn, Alabama

1103-016

SOUTH DEAN ROAD CORRIDOR

Dean Road (3-Lane Cross-section with Bicycle Lanes) Approaching Glenn Avenue



NORTH DEAN ROAD CORRIDOR

Dean Road at Glenn Avenue with Dual Left Turns for Glenn Avenue Approaches



SKIPPER
CONSULTING INC



North

Graphic
Scale: 1"=100'

January 2019

Figure 10
Dean Road
at Glenn Avenue
Dean Road
Auburn, Alabama

1103-016

NORTH DEAN ROAD CORRIDOR

Dean Road (Dedicated Left, Though, and Right Lanes for NB/SB Approaches) at Opelika Road



SKIPPER
CONSULTING INC



North

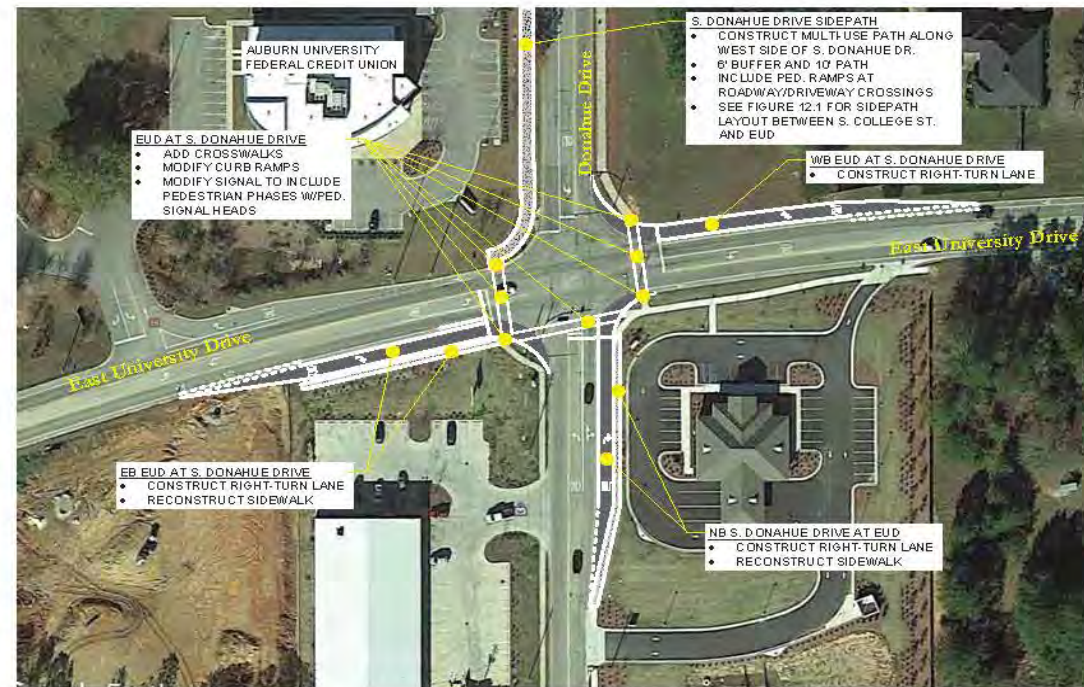
Graphic
Scale: 1"=100'

Figure 12
Dean Road
at Opelika Road
Dean Road
Auburn, Alabama

January 2019

1103-016

SOUTH DONAHUE DRIVE CORRIDOR



Note: Pedestrian ramps shall include tactile warning strips and truncated domes per ADA.

SKIPPER
CONSULTING INC

Legend

- Required Pavement
- Required Multi-Use Path/Sidewalk



North

Graphic Scale: 1"=100'

Figure 13
S. Donahue Dr. at EUD
Future Improvements


SOUTH DONAHUE DRIVE CORRIDOR



Note: Pedestrian ramps shall include tactile warning strips and truncated domes per ADA.

SKIPPER
CONSULTING INC

Legend

 Required Sidewalk



Graphic Scale: 1"=100'

Figure 12.1
S. Donahue Dr. Sidepath
S. College St. to EUD

Donahue Drive
Auburn, Alabama

1103-016

NORTH DONAHUE DRIVE CORRIDOR



Note: Pedestrian ramps shall include tactile warning strips and truncated domes per ADA.

SKIPPER
 CONSULTING INC

Legend	
	Required Pavement
	Required Sidewalk



Figure 11
 Donahue Drive at
 Glenn Avenue
 Future Improvements
 February 2019 Auburn, Alabama 1103-013

NORTH DONAHUE DRIVE CORRIDOR



Note: Pedestrian ramps shall include tactile warning strips and truncated domes per ADA.

SKIPPER
CONSULTING INC

Legend

- Required Pavement
- Required Sidewalk



North
Graphic Scale: 1"=100'

Figure 10
Donahue Drive at Martin
Luther King Drive/Bragg Avenue
Future Improvements

Auburn, Alabama 1103-013

NORTH DONAHUE DRIVE CORRIDOR



- N. DONAHUE DRIVE SIDEWALKS**
- CONSTRUCT SIDEWALK ALONG WEST SIDE OF N. DONAHUE DR.
 - CONSTRUCT PED. RAMPS AT ROADWAY/DRIVEWAY CROSSINGS
 - INSTALL CROSSWALKS CROSSING PUBLIC ROADWAYS

- N. DONAHUE DRIVE SIDEWALKS**
- CONSTRUCT SIDEWALK ALONG WEST SIDE OF N. DONAHUE DR.
 - CONSTRUCT PED. RAMPS AT ROADWAY/DRIVEWAY CROSSINGS
 - INSTALL CROSSWALKS CROSSING PUBLIC ROADWAYS

Note: Pedestrian ramps shall include tactile warning strips and truncated domes per ADA.

SKIPPER
CONSULTING INC

Legend

 Required Sidewalk



Graphic Scale: 1"=100'

Figure 9.1
N. Donahue Dr. Sidewalk
Spencer Ave. to Clark Ave.

Donahue Drive
Auburn, Alabama 1103-018
Feb. 2019

NORTH DONAHUE DRIVE CORRIDOR



SKIPPER
CONSULTING INC

Legend

- Required Pavement
- Required Sidewalk



North

Graphic Scale: 1"=100'

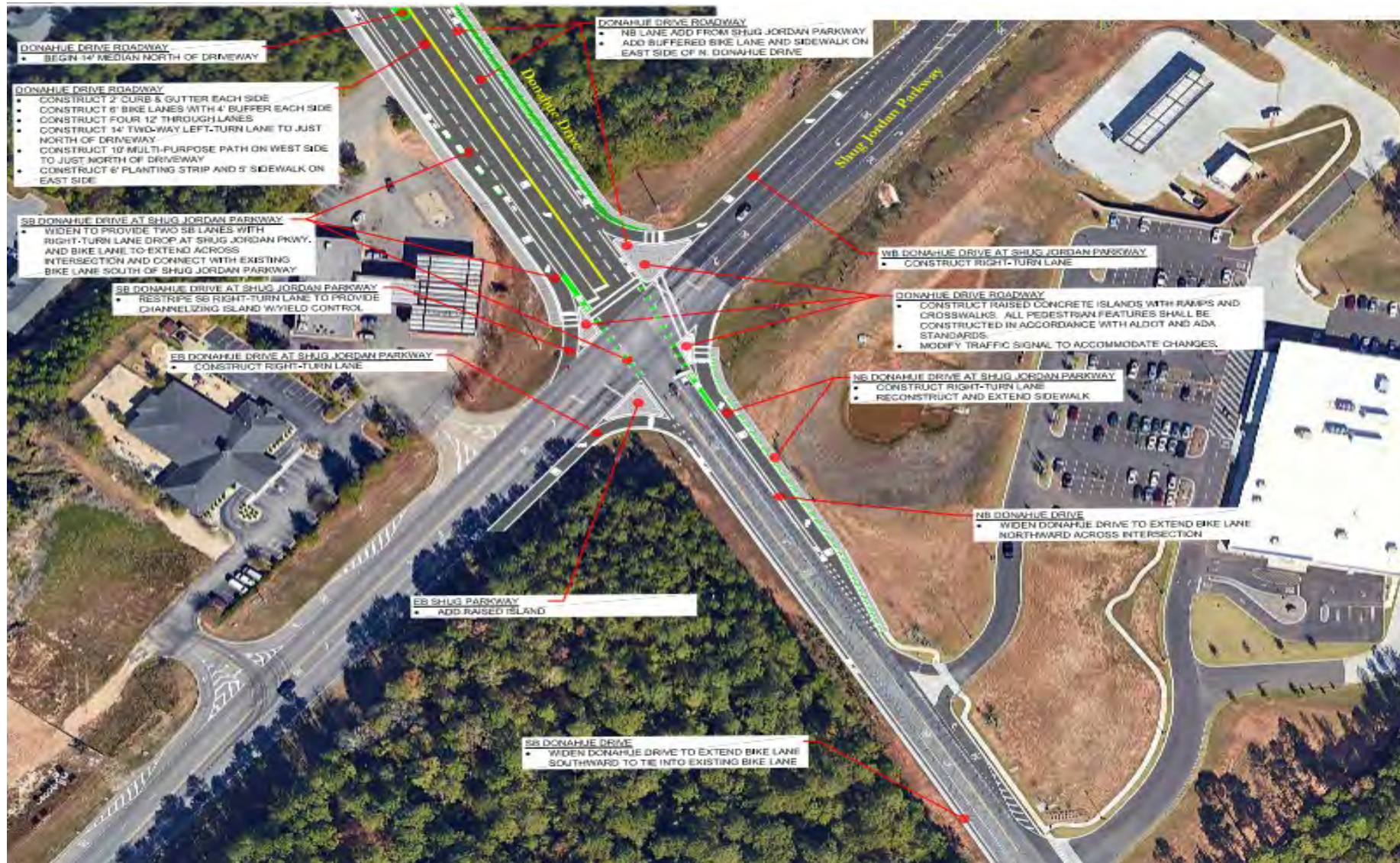
Feb. 2019

Figure 4
Donahue Drive at
Shug Jordan Parkway
Existing Improvements

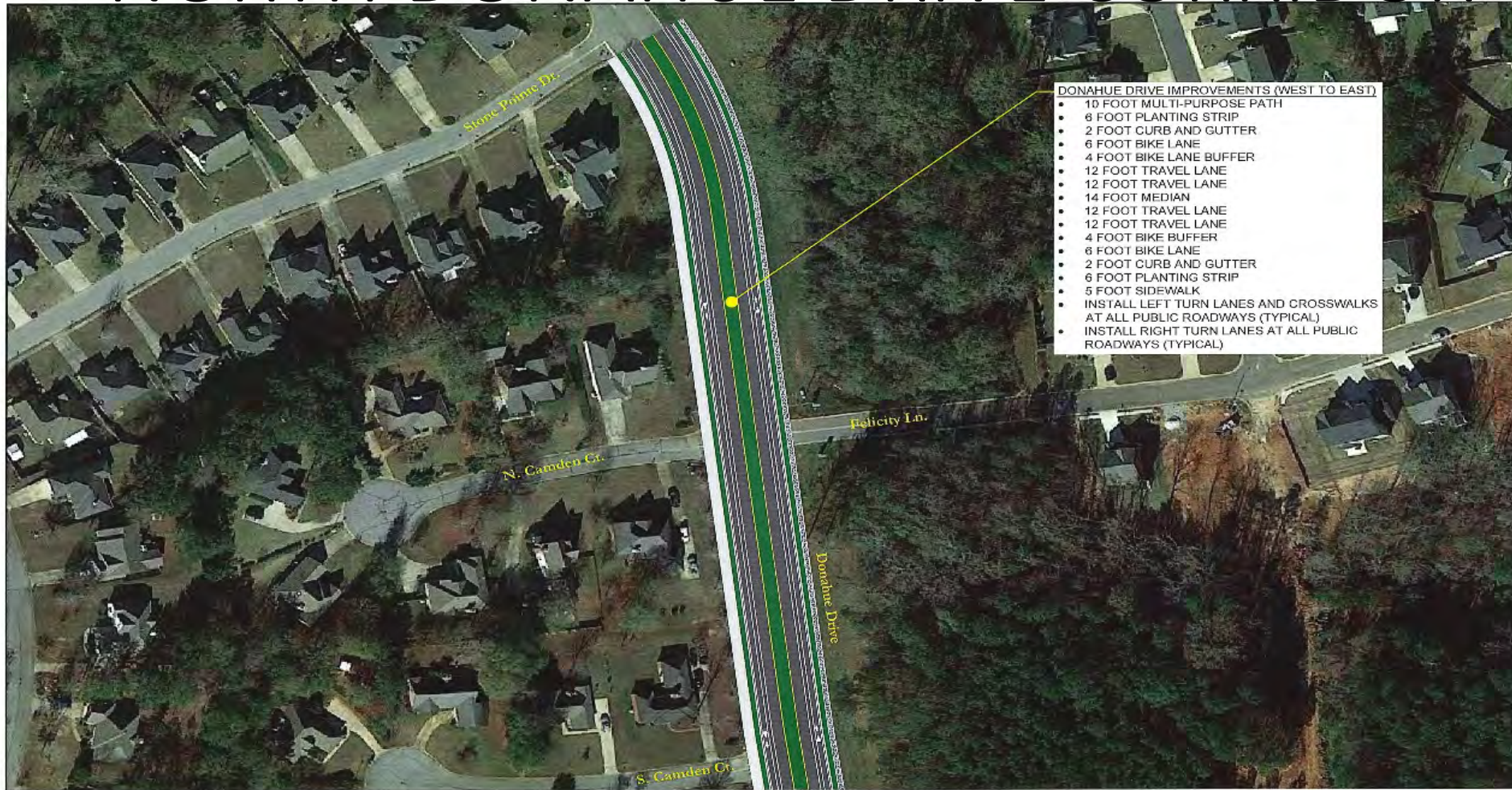
Auburn, Alabama

1103-013

NORTH DONAHUE DRIVE CORRIDOR



NORTH DONAHUE DRIVE CORRIDOR



- DONAHUE DRIVE IMPROVEMENTS (WEST TO EAST)**
- 10 FOOT MULTI-PURPOSE PATH
 - 8 FOOT PLANTING STRIP
 - 2 FOOT CURB AND GUTTER
 - 6 FOOT BIKE LANE
 - 4 FOOT BIKE LANE BUFFER
 - 12 FOOT TRAVEL LANE
 - 12 FOOT TRAVEL LANE
 - 14 FOOT MEDIAN
 - 12 FOOT TRAVEL LANE
 - 12 FOOT TRAVEL LANE
 - 4 FOOT BIKE BUFFER
 - 6 FOOT BIKE LANE
 - 2 FOOT CURB AND GUTTER
 - 6 FOOT PLANTING STRIP
 - 5 FOOT SIDEWALK
 - INSTALL LEFT TURN LANES AND CROSSWALKS AT ALL PUBLIC ROADWAYS (TYPICAL)
 - INSTALL RIGHT TURN LANES AT ALL PUBLIC ROADWAYS (TYPICAL)

SKIPPER
CONSULTING INC

Legend
 [Grey Box] Required Pavement
 [Green Box] Planted Area
 [Light Green Box] Sidewalk/Multi-Use Path

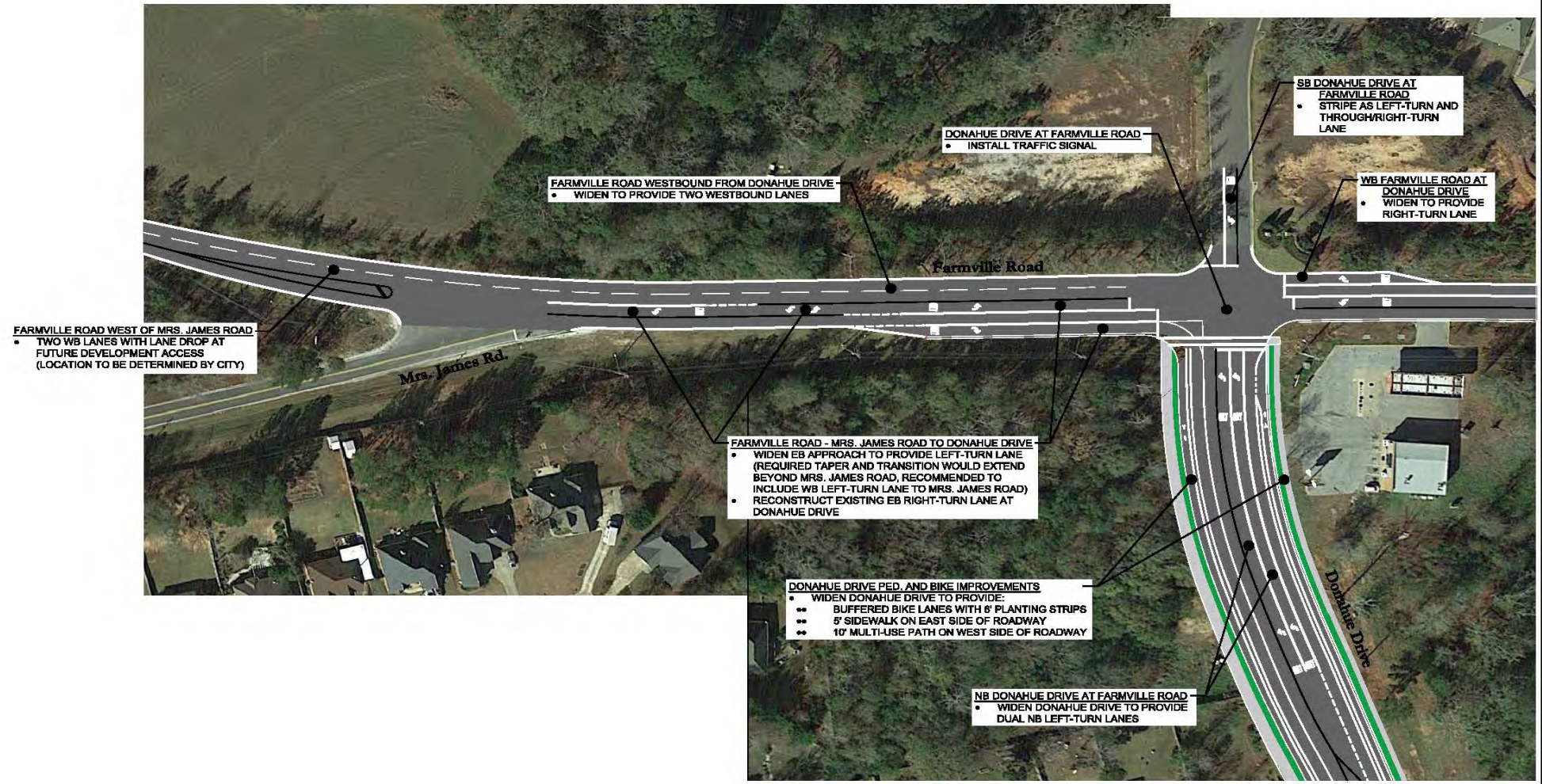
North
Graphic Scale: 1"=100'

Figure 10.1
Donahue Drive
Future Improvements
Auburn, Alabama

Year 2026

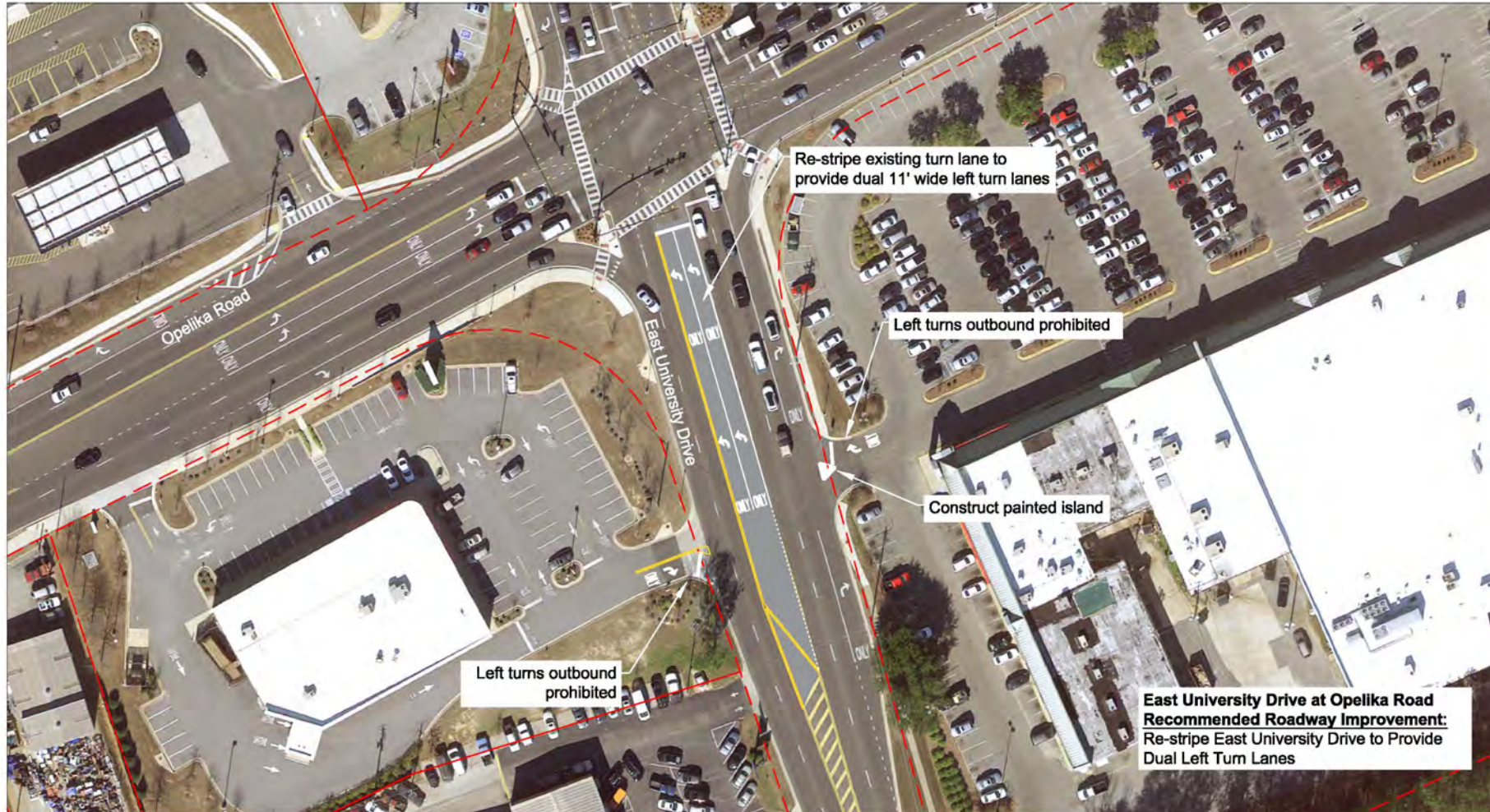
1103-013

NORTH DONAHUE DRIVE CORRIDOR

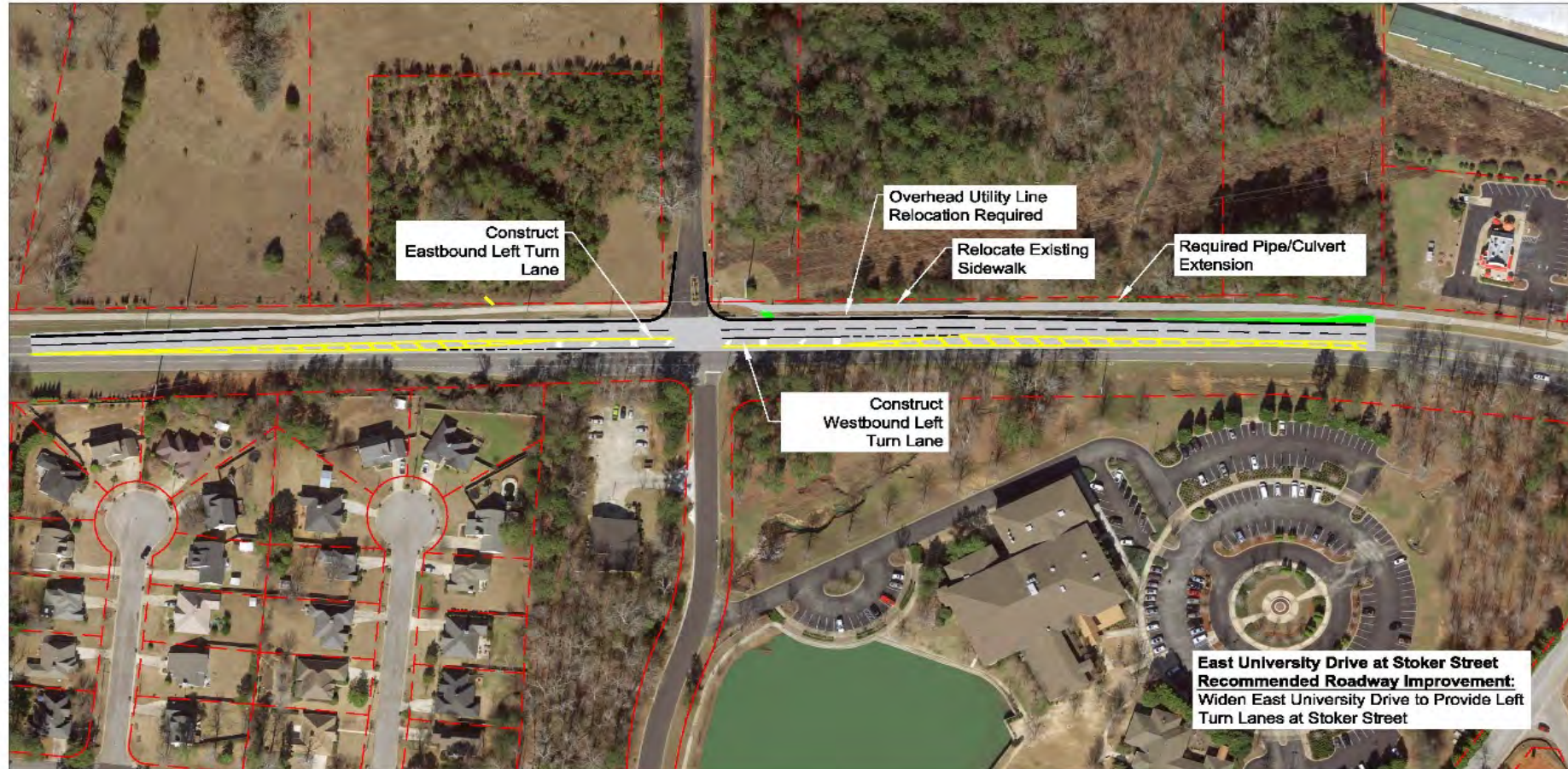


	Legend Required Pavement Planted Area Sidewalk/Multi-use Path	 North Graphic Scale: 1"=100'	Figure 8A Donahue Drive at Farmville Road Auburn, Alabama 1103-013

EAST UNIVERSITY DRIVE CORRIDOR



EAST UNIVERSITY DRIVE CORRIDOR



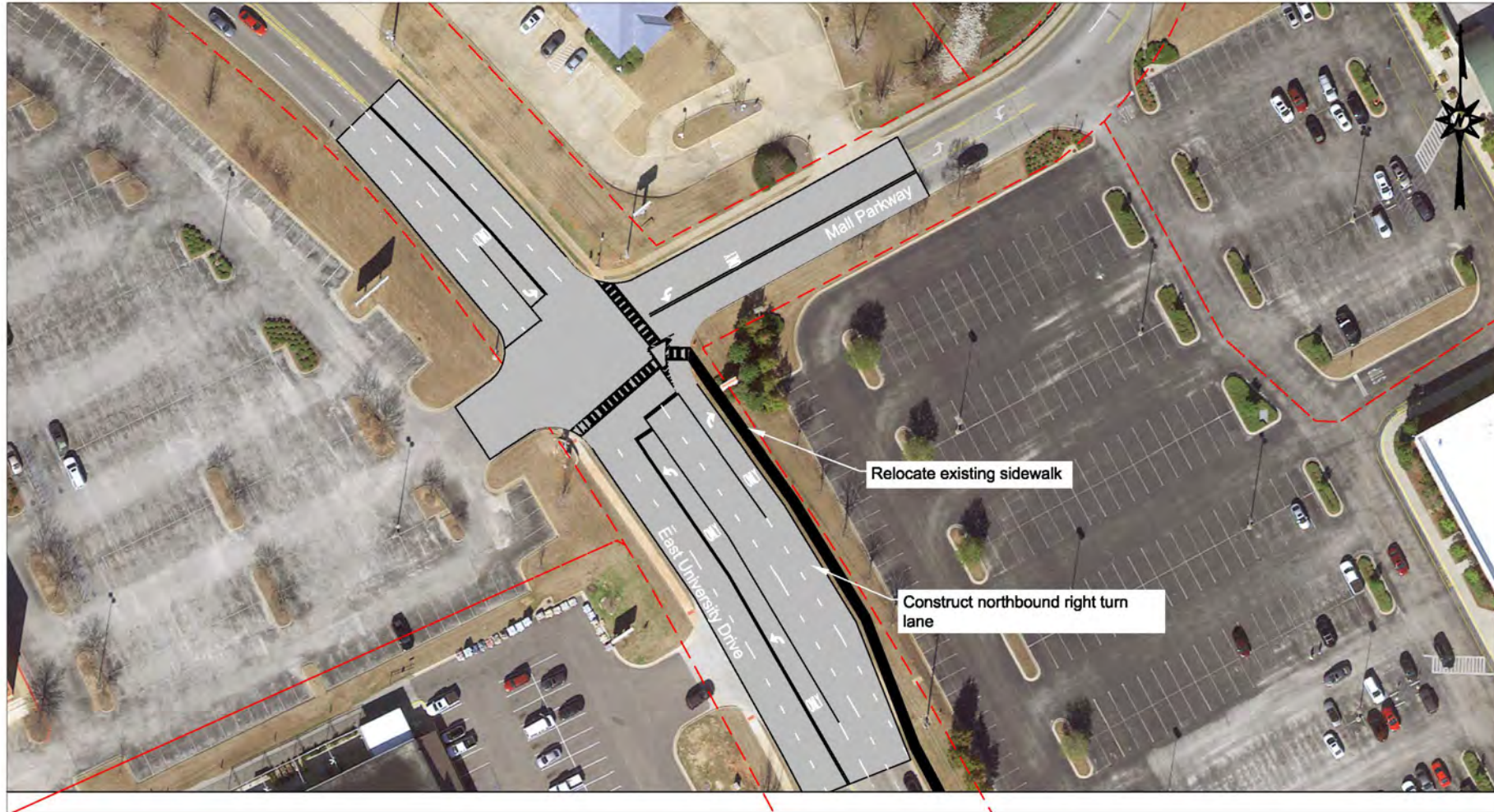
SKIPPER
CONSULTING INC

**Figure 4 - Recommended Roadway Improvements -Existing Conditions
East University Drive at Stoker Street
Auburn, Alabama**

LEGEND

Scale: Not to Scale
Date: January 2019

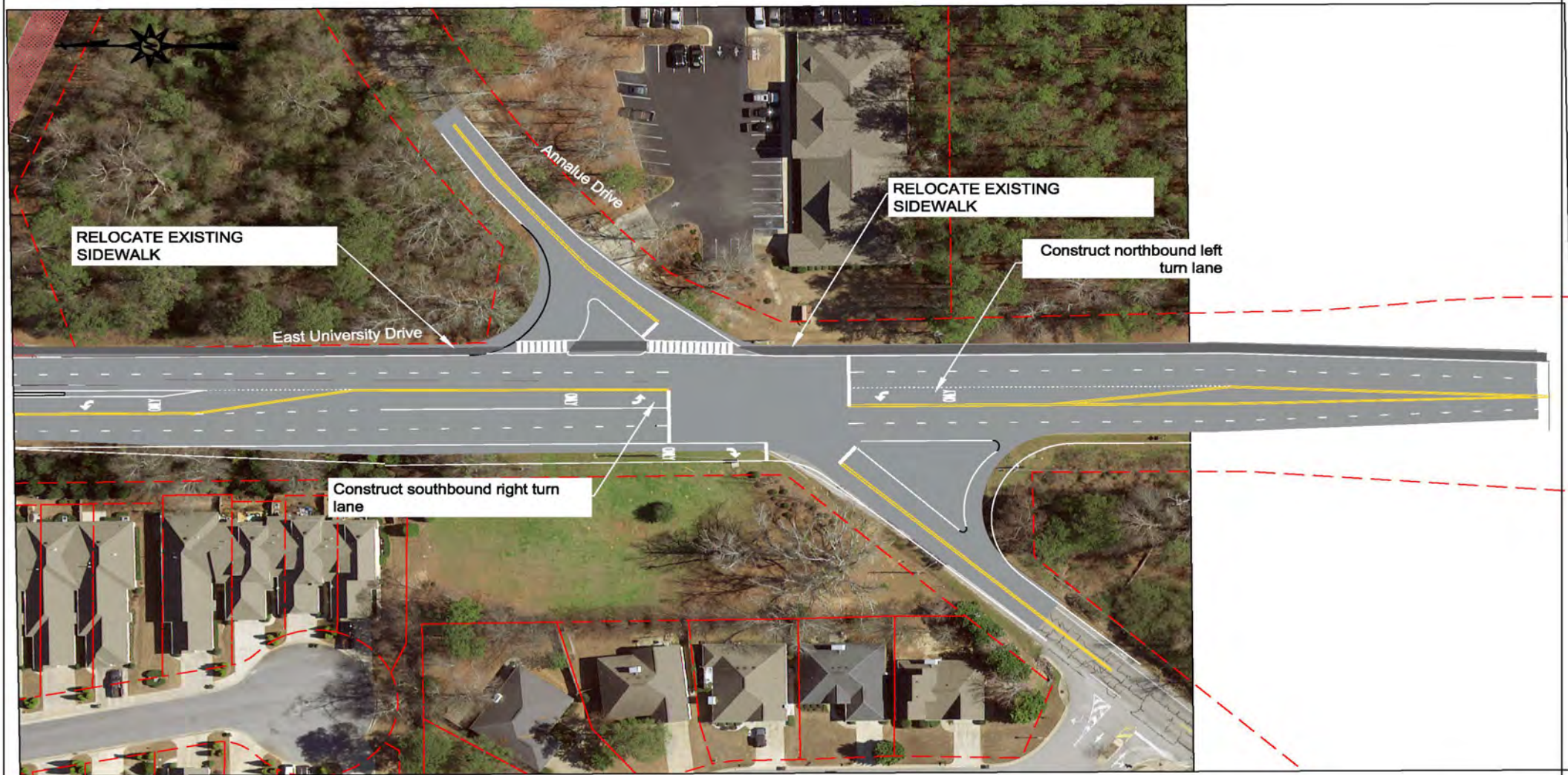
EAST UNIVERSITY DRIVE CORRIDOR



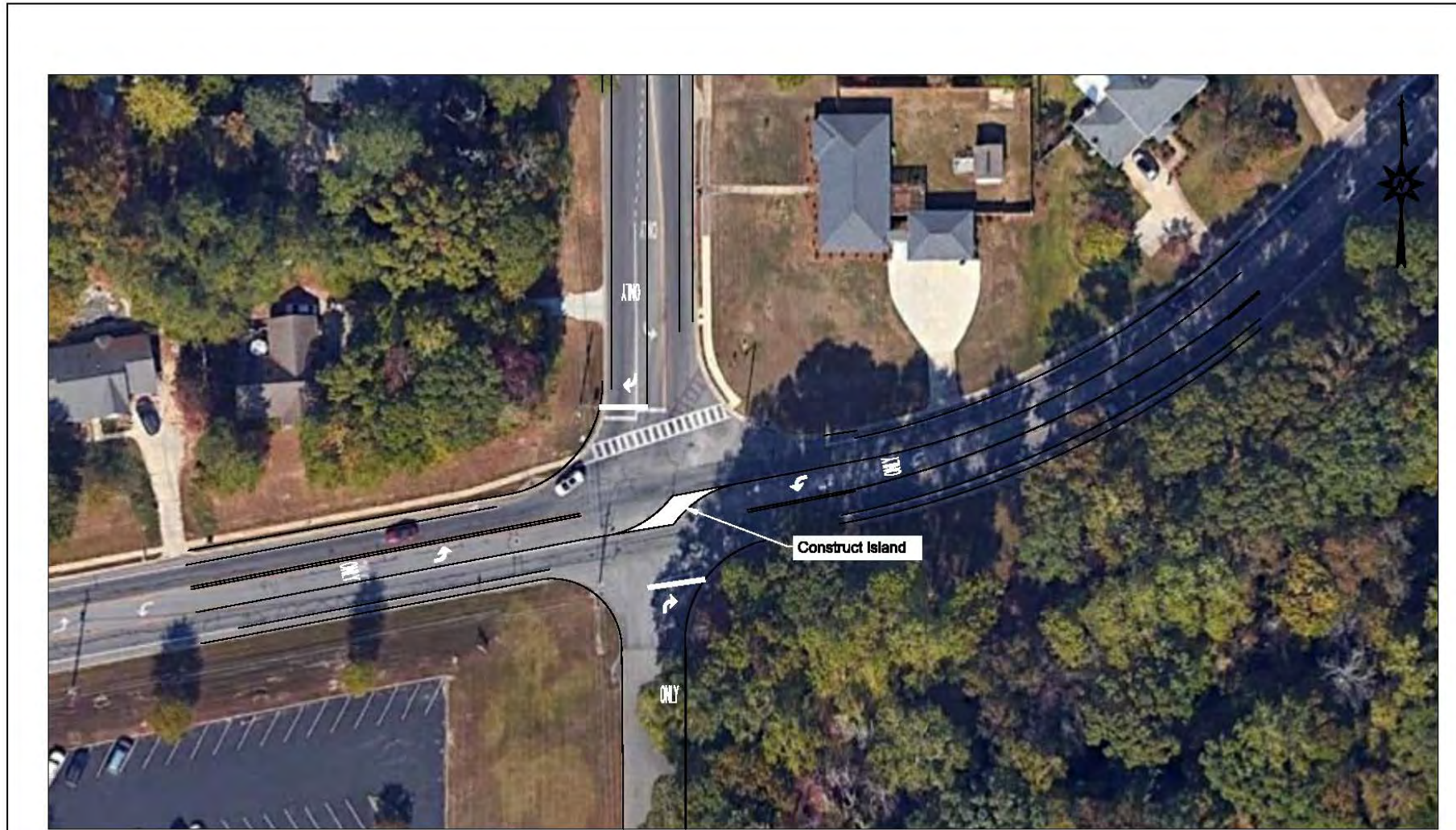
EAST UNIVERSITY DRIVE CORRIDOR



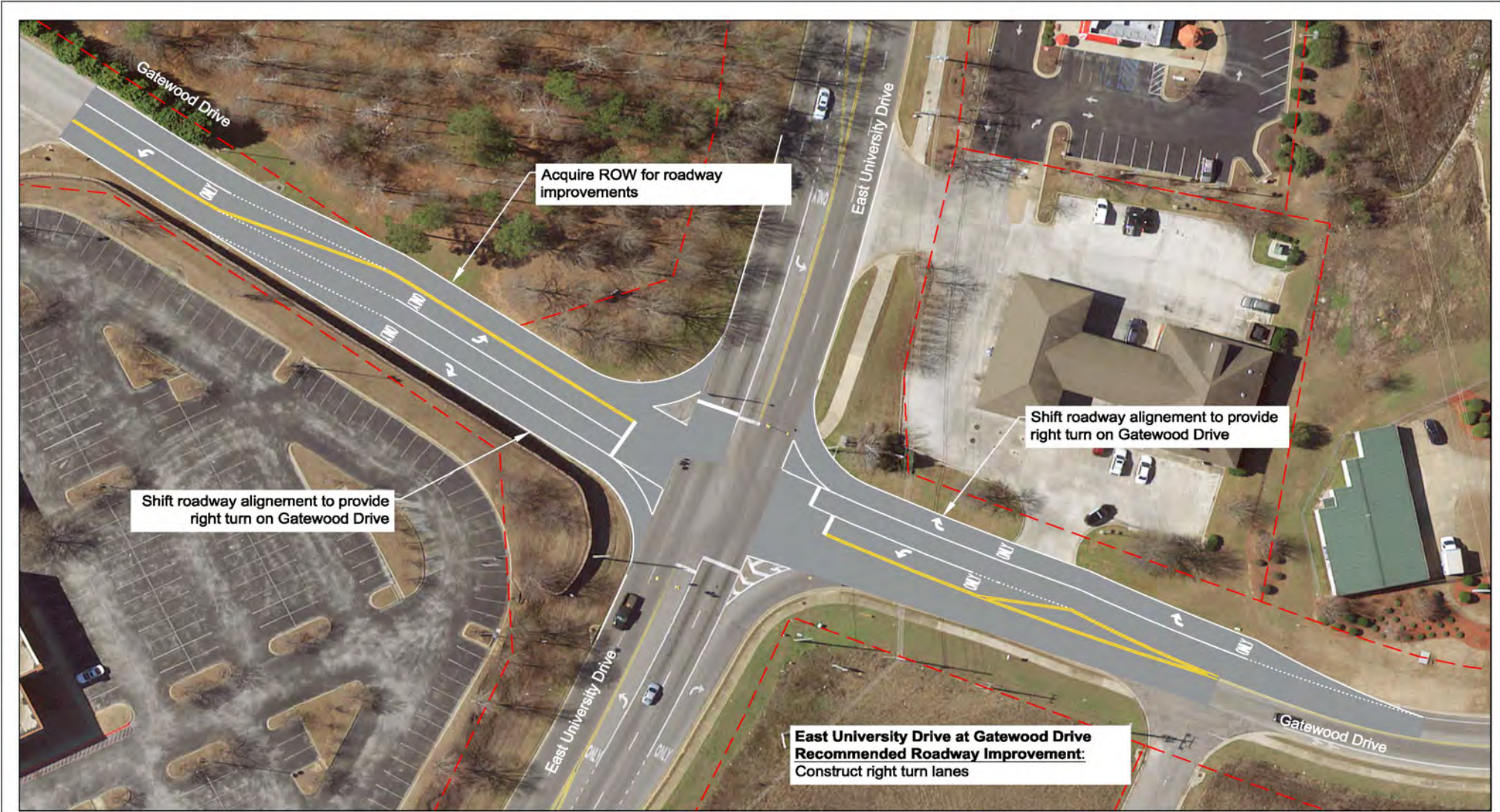
EAST UNIVERSITY DRIVE CORRIDOR



EAST UNIVERSITY DRIVE CORRIDOR



GATEWOOD DRIVE

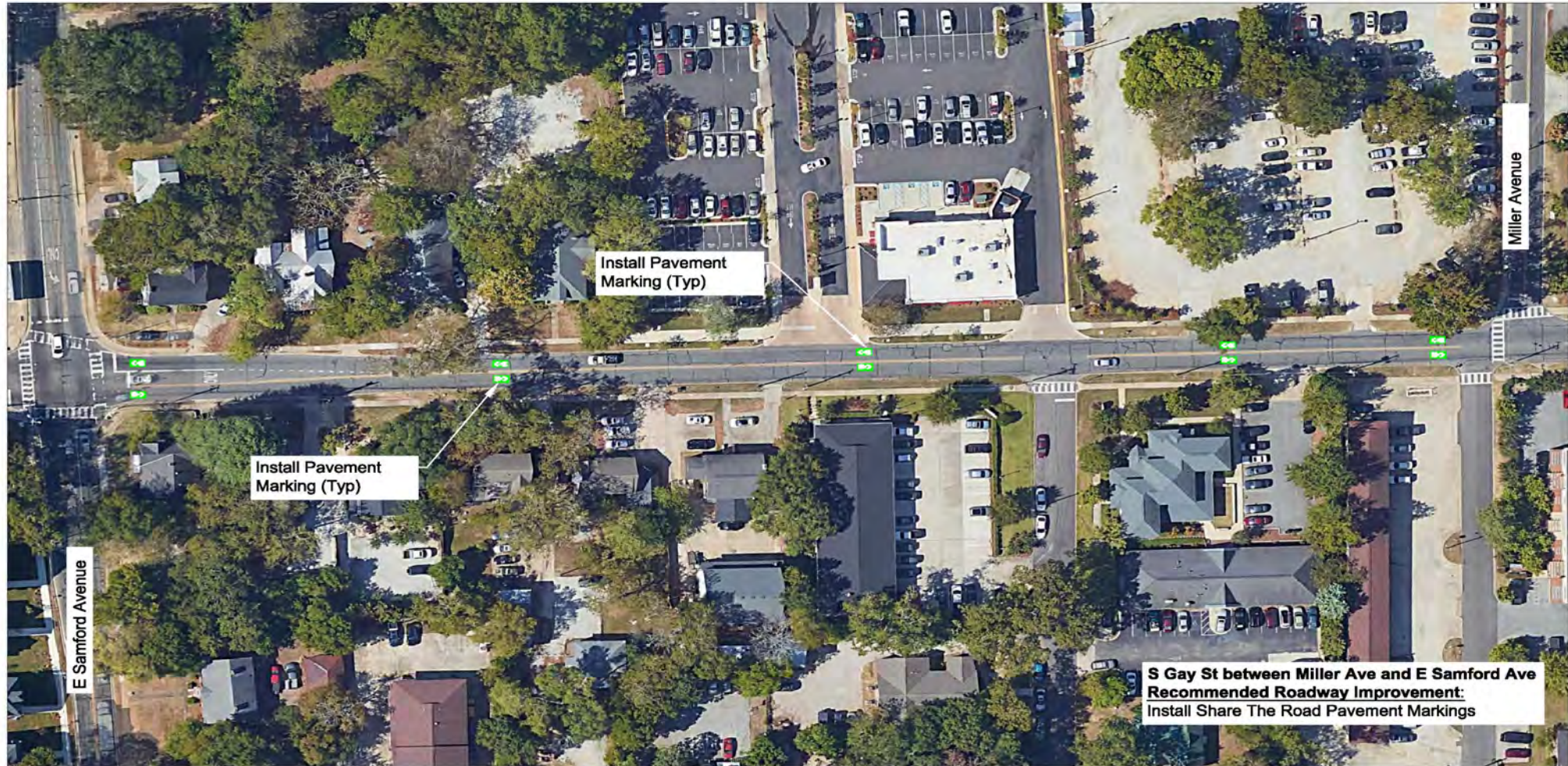


**Figure 8 - Recommended Roadway Improvements -Future Conditions
Shug Jordan Parkway at Martin Luther King Drive Ramp
Auburn, Alabama**

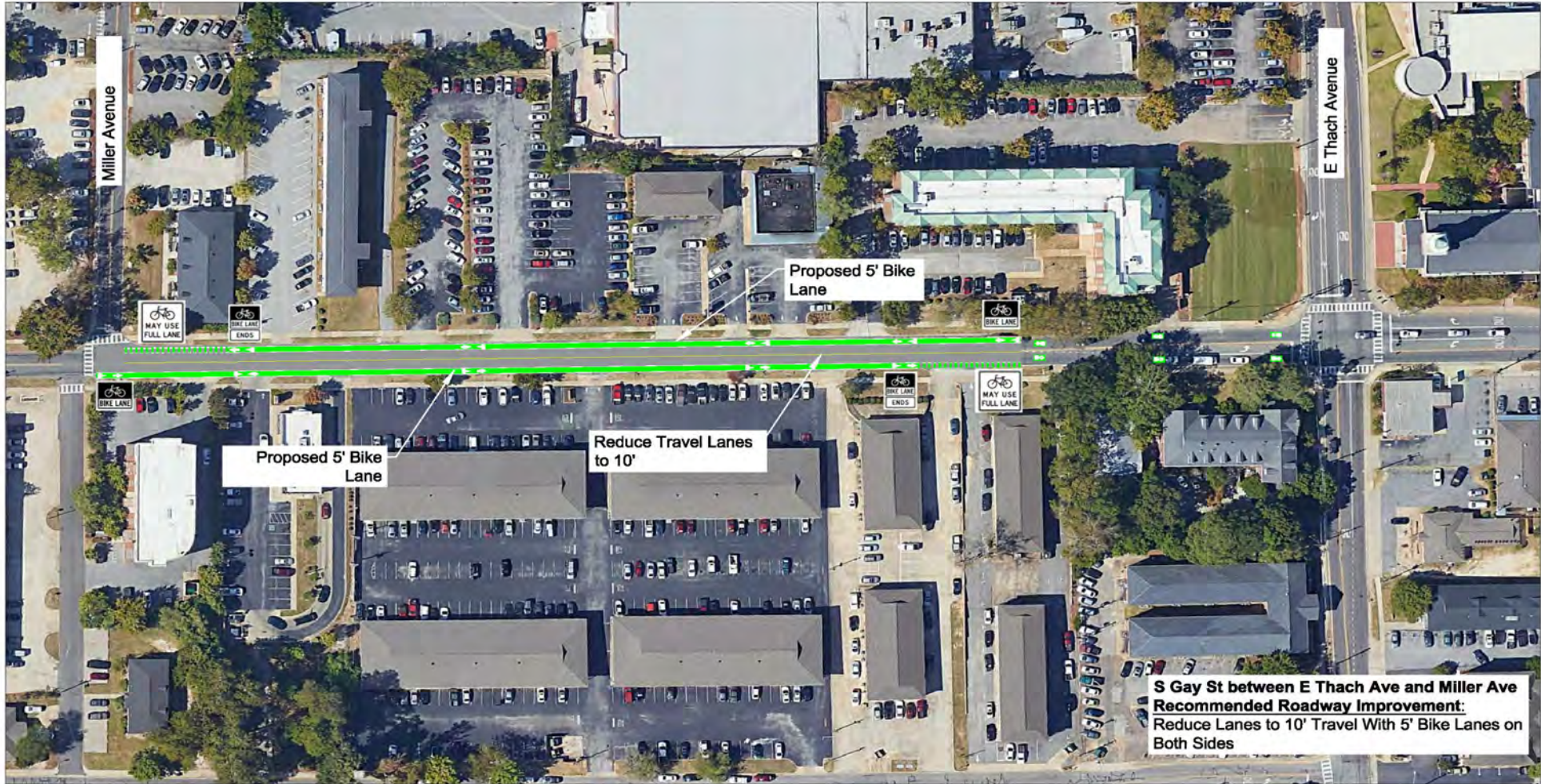
LEGEND

Scale: Not to Scale
Date: January 2019

SOUTH GAY STREET CORRIDOR



SOUTH GAY STREET CORRIDOR



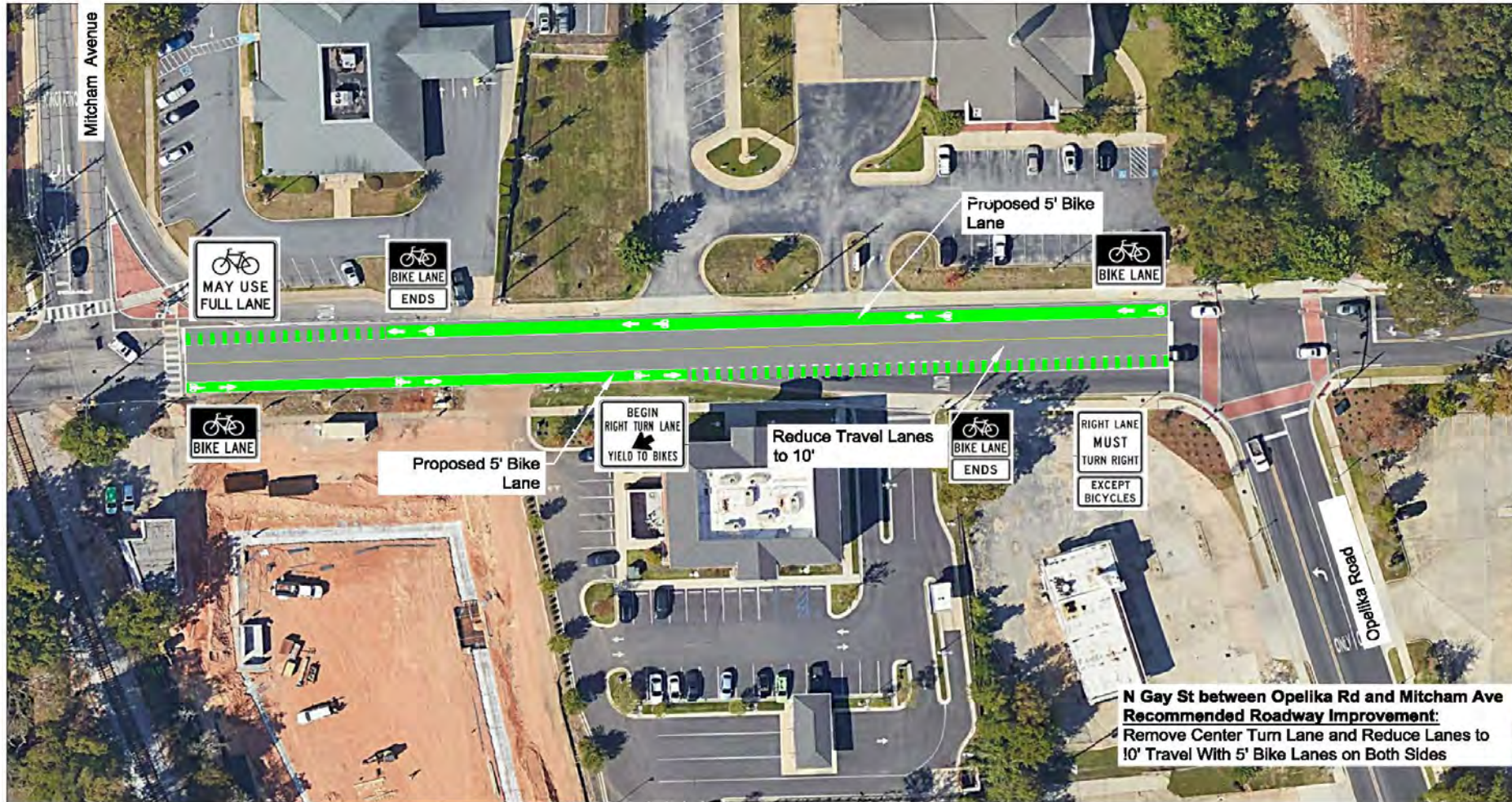
SOUTH GAY STREET CORRIDOR



SOUTH GAY STREET CORRIDOR



NORTH GAY STREET CORRIDOR



NORTH GAY STREET CORRIDOR



EAST GLENN AVENUE CORRIDOR



Note: Pedestrian ramps shall include tactile warning strips and truncated domes per ADA.

SKIPPER
CONSULTING INC

Legend

- Required Pavement
- Required Grass
- Required Sidewalk
- Required Ped. Ramp



North
Graphic Scale: 1"=50'

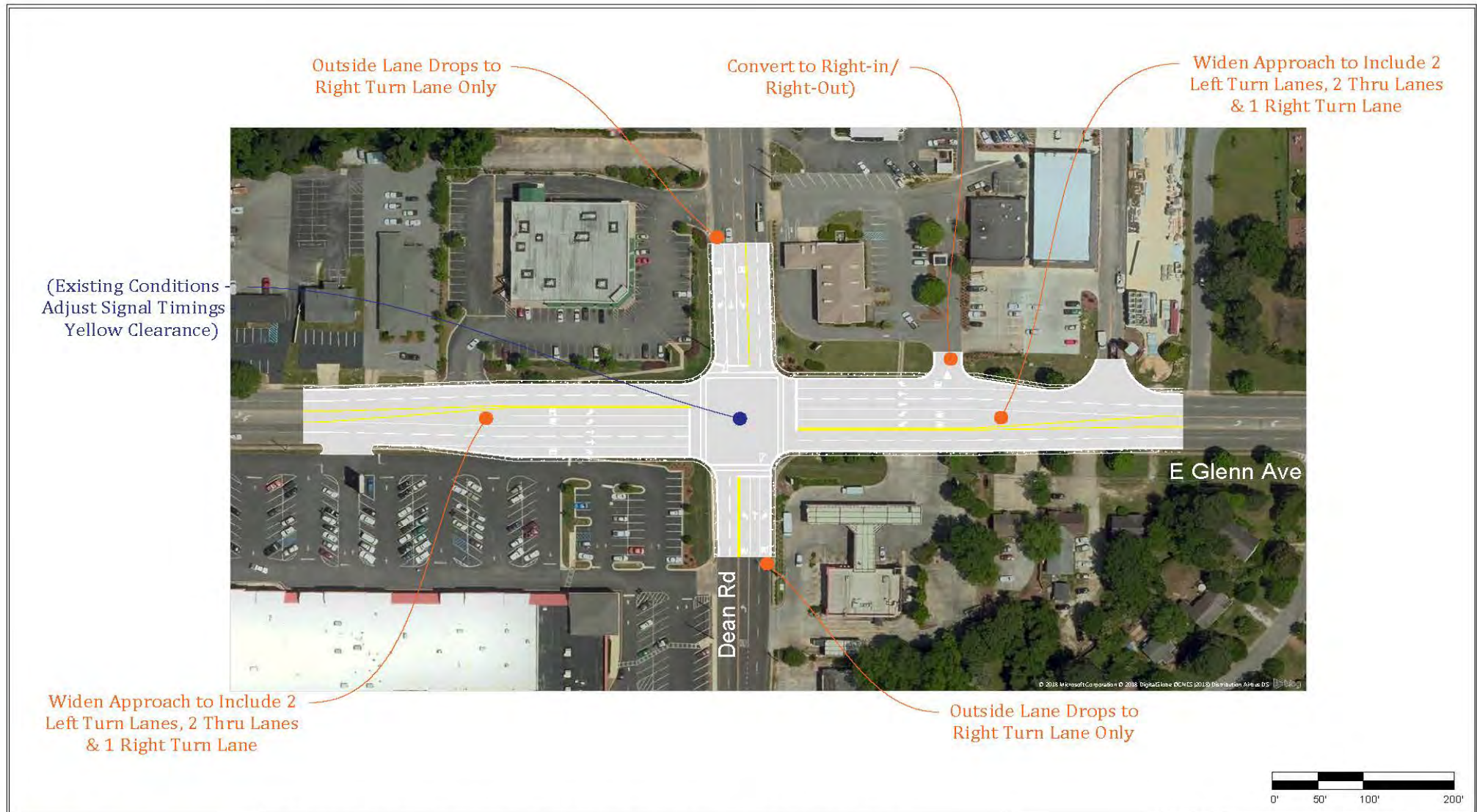
Figure 24
Glenn Ave. at N. College St.
Future Improvements

College Street
Auburn, Alabama
October 2018 1103-016

EAST GLENN AVENUE CORRIDOR



EAST GLENN AVENUE CORRIDOR



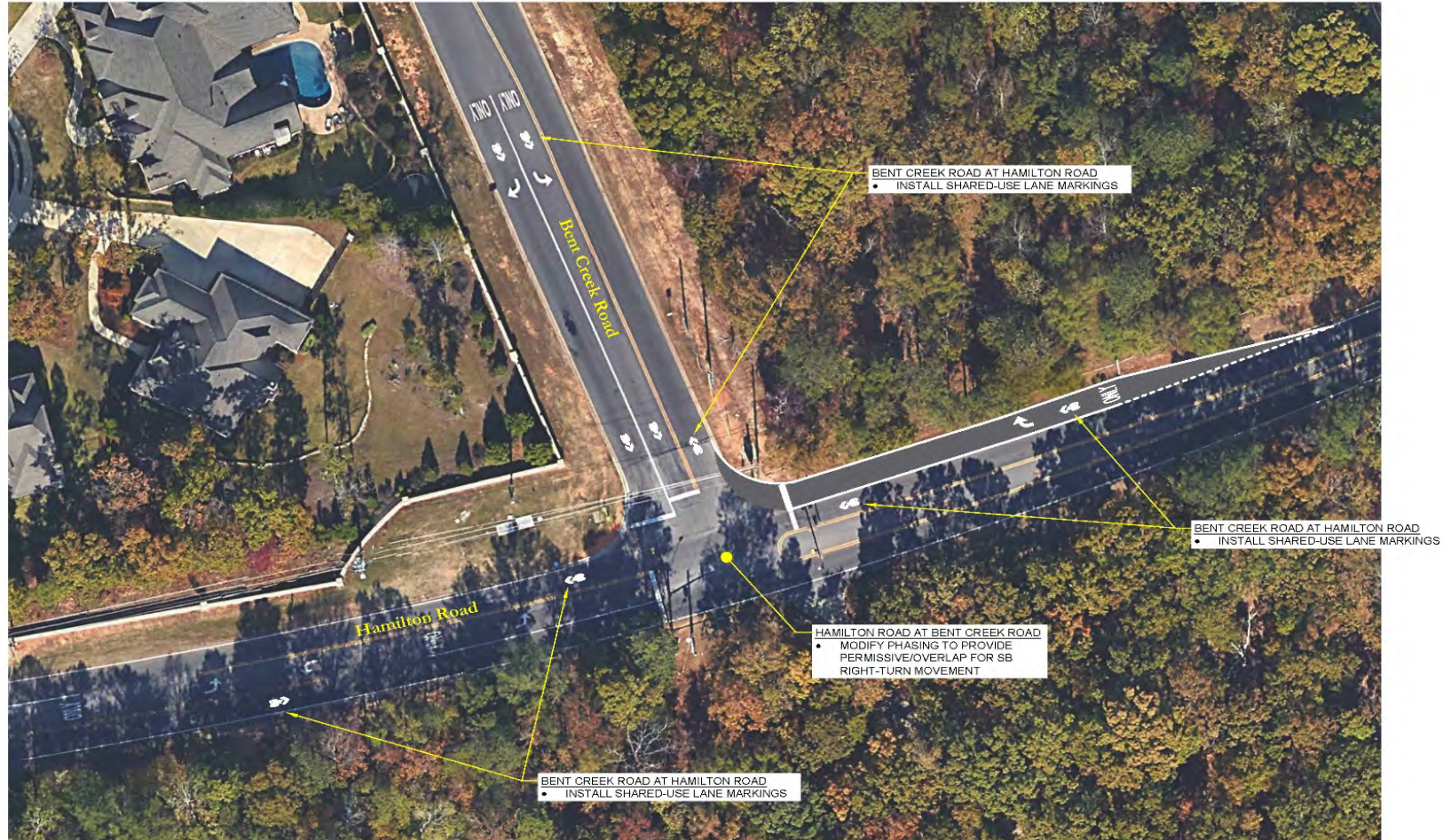
EAST GLENN AVENUE CORRIDOR



EAST GLENN AVENUE CORRIDOR



HAMILTON ROAD CORRIDOR



SKIPPER
CONSULTING INC

Legend

■ Required Pavement



North

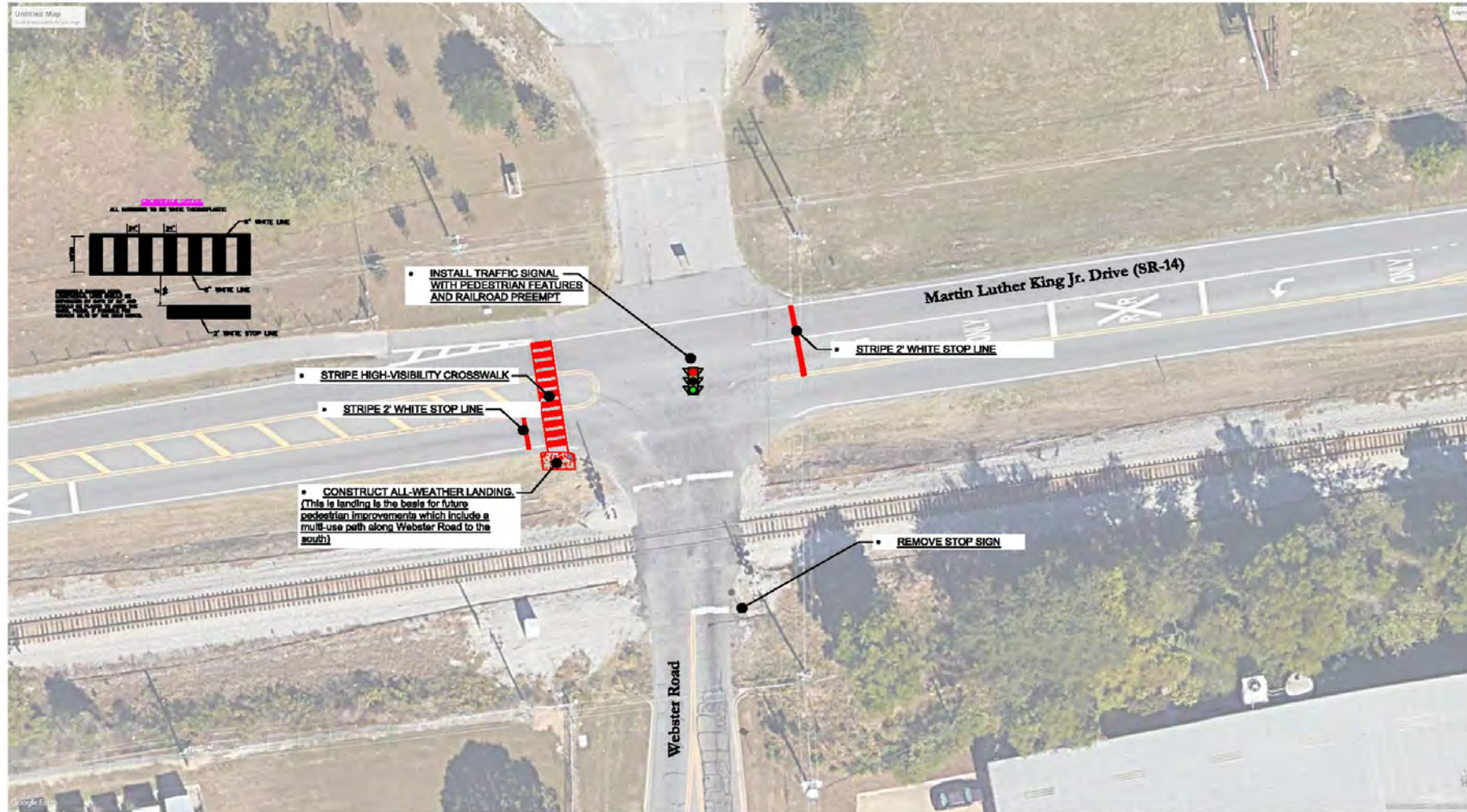
Graphic Scale: 1"=50'

February 2019

Figure 5
Bent Creek Road at Hamilton Road
Bent Creek Road
Auburn, Alabama

1103-016

MARTIN LUTHER KING DRIVE CORRIDOR



	Legend	<p>North</p> <p>Graphic Scale: NTS</p>	<p>Figure 6</p> <p>MLK Drive at Webster Road</p> <p>Recommended Improvements</p>

MARTIN LUTHER KING DRIVE CORRIDOR



Existing Conditions Recommended Improvements
MLK/AL-14 at Shug Jordan Parkway Ramps
Auburn, Alabama

NOTES

- Conceptual RAB based on 130' dia inscribed circle
- Location of RAB constrained by railroad, bridge piers

Scale: Not to Scale
 Date: Oct 2018

FIGURE
8

OPELIKA ROAD CORRIDOR

Opelika Road Corridor Study – Auburn, Alabama



Figure 3 – Opelika Road at Ross Street NB and WB Right Turn Lane Improvements

OPELIKA ROAD CORRIDOR

Opelika Road Corridor Study – Auburn, Alabama



Figure 5 – Opelika Road at Dean Rd. – Modify NB Right Turn Lane with "Urban Smart Channel" Design

OPELIKA ROAD CORRIDOR

Opelika Road Corridor Study – Auburn, Alabama

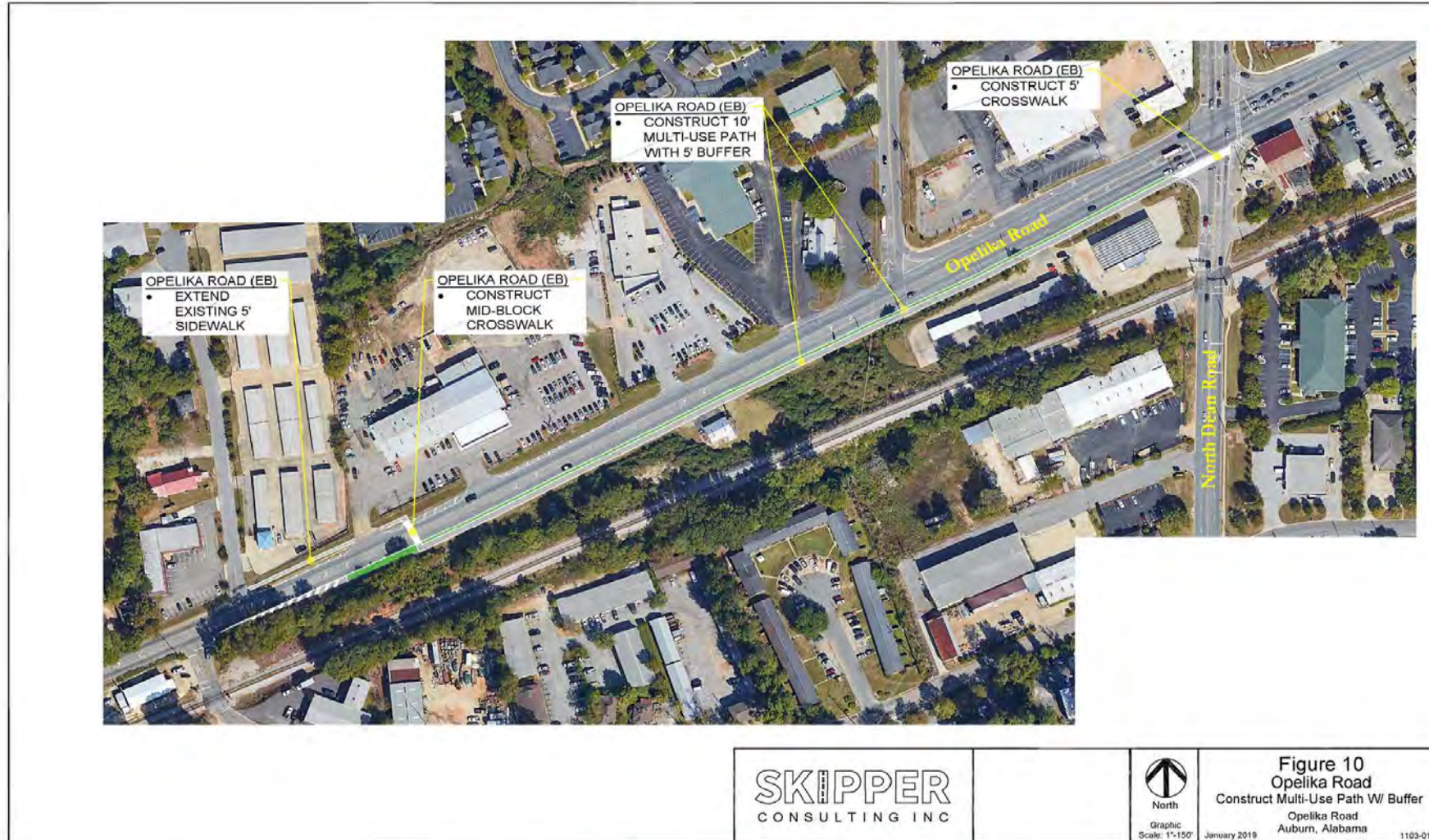
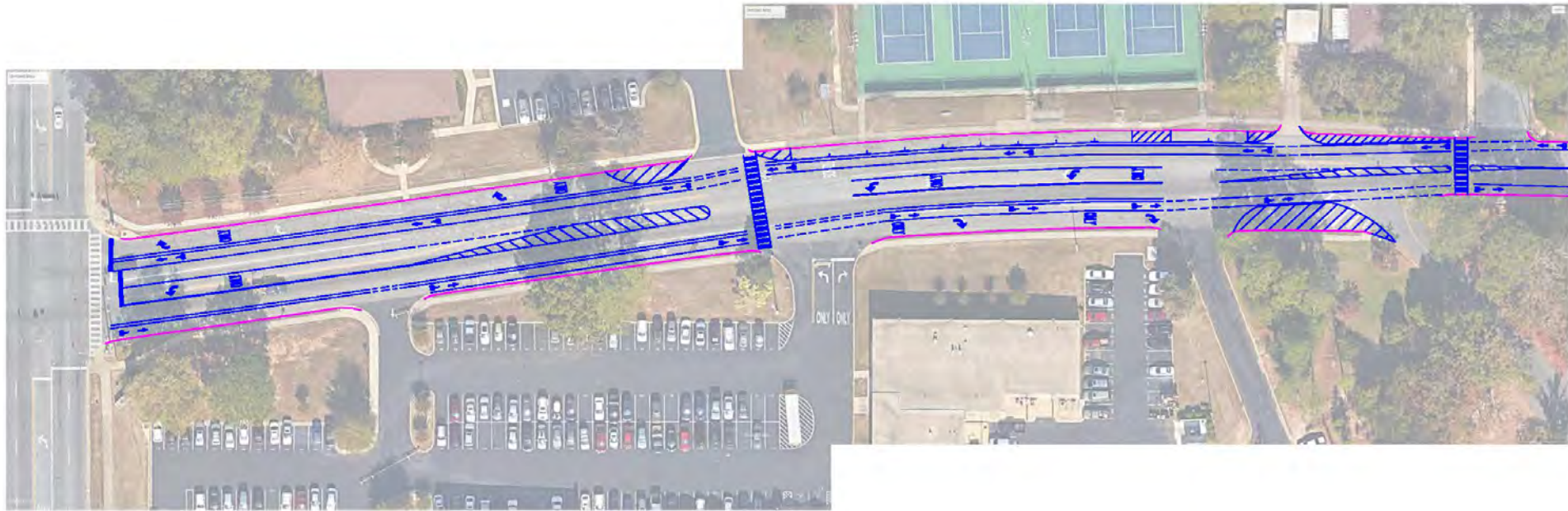
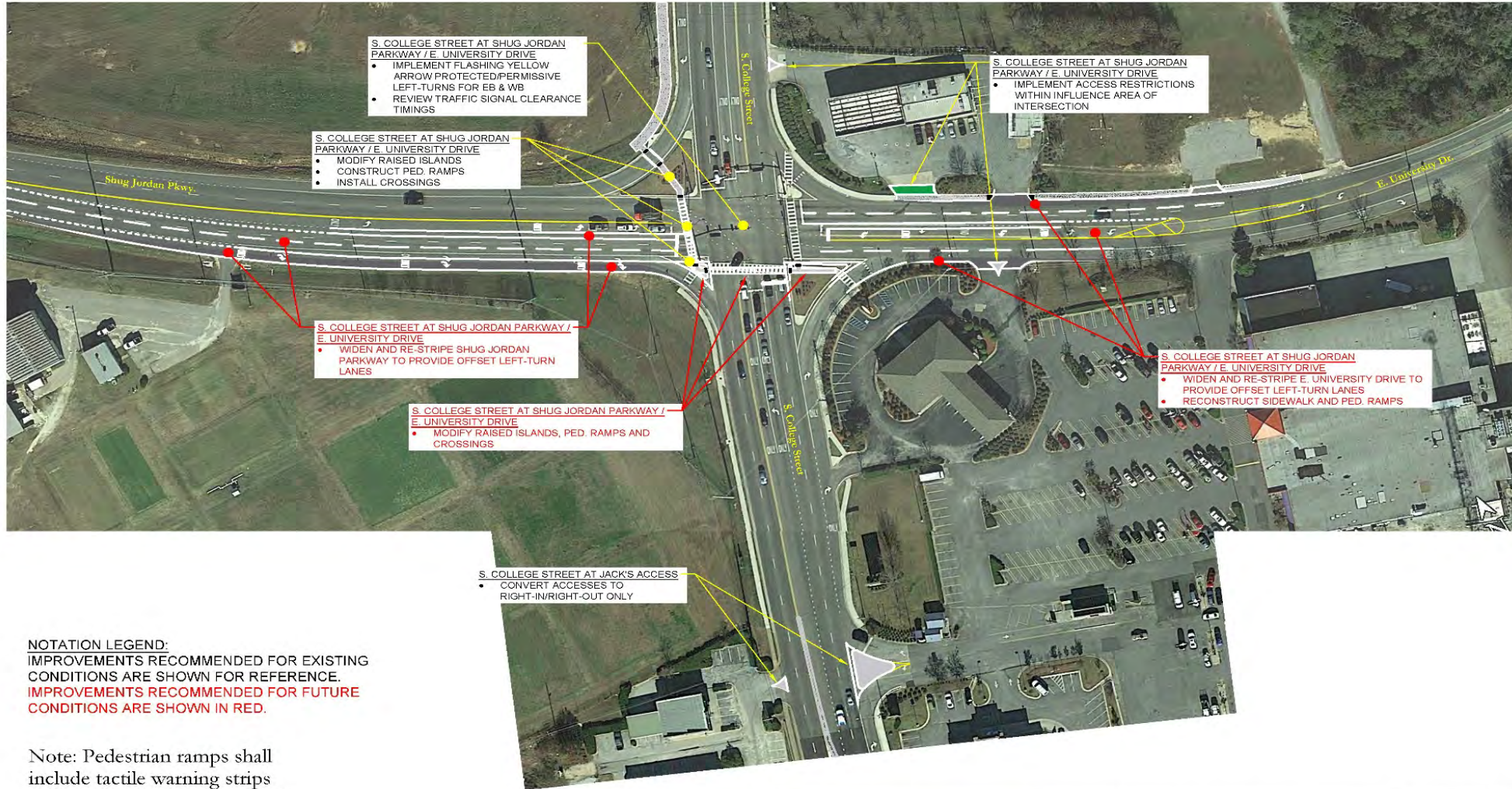


Figure 10 – Opelika Road with Construction of Multi-Use Path W/ Buffer

SAMFORD AVENUE CORRIDOR



SHUG JORDAN PARKWAY CORRIDOR



SKIPPER
CONSULTING INC

Legend	
	Required Pavement
	Required Grass
	Required Multi-Use Path/Sidewalk
	Required Ped. Ramp

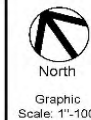
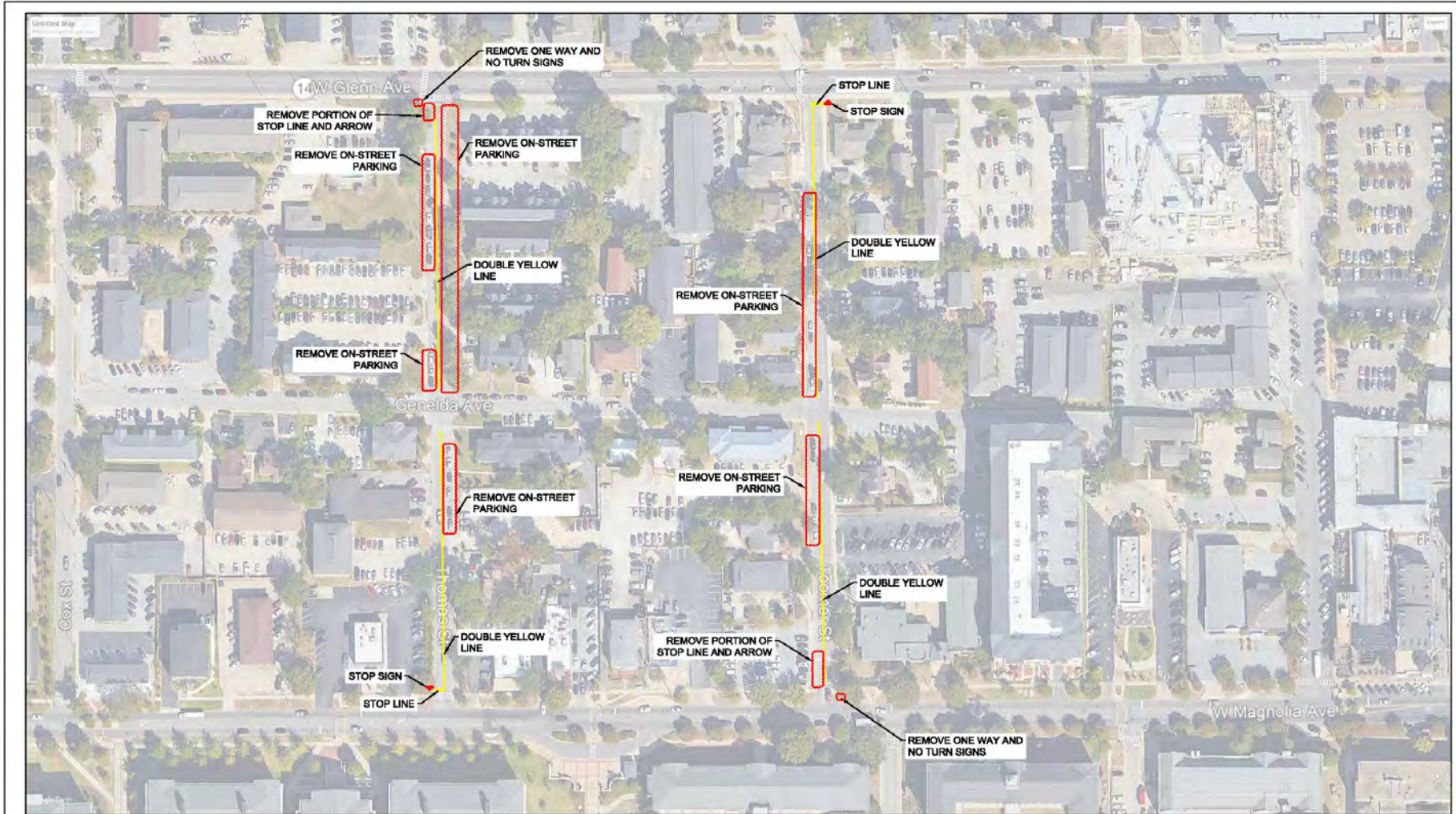


Figure 20
 S. College St. at Shug Jordan Parkway / E. University Drive
 Future Improvements
 College Street
 Auburn, Alabama
 October 2018 1103-016

SHUG JORDAN PARKWAY CORRIDOR



TWO WAY STREET CONVERSION THOMAS STREET & TOOMER STREET



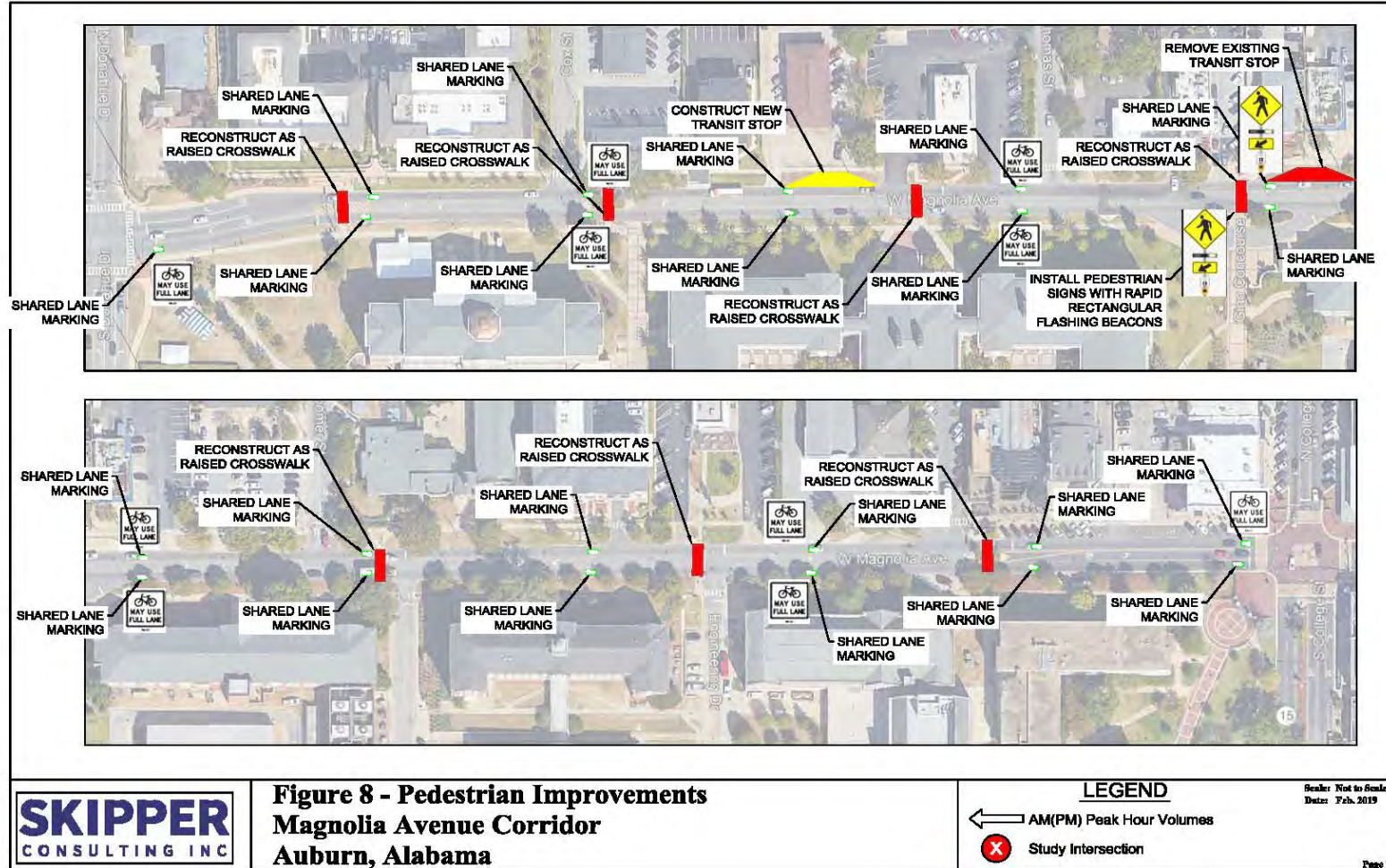
LEGEND

- ← AM(PM) Peak Hour Volumes
- ⊗ Study Intersection

GLENN AVENUE CORRIDOR



MAGNOLIA AVENUE CORRIDOR PEDEDSTRIAN IMPROVEMENTS



Questions ?

Engineering Services Department

Alison Frazier, P.E.

Engineering Services Director/City Engineer

